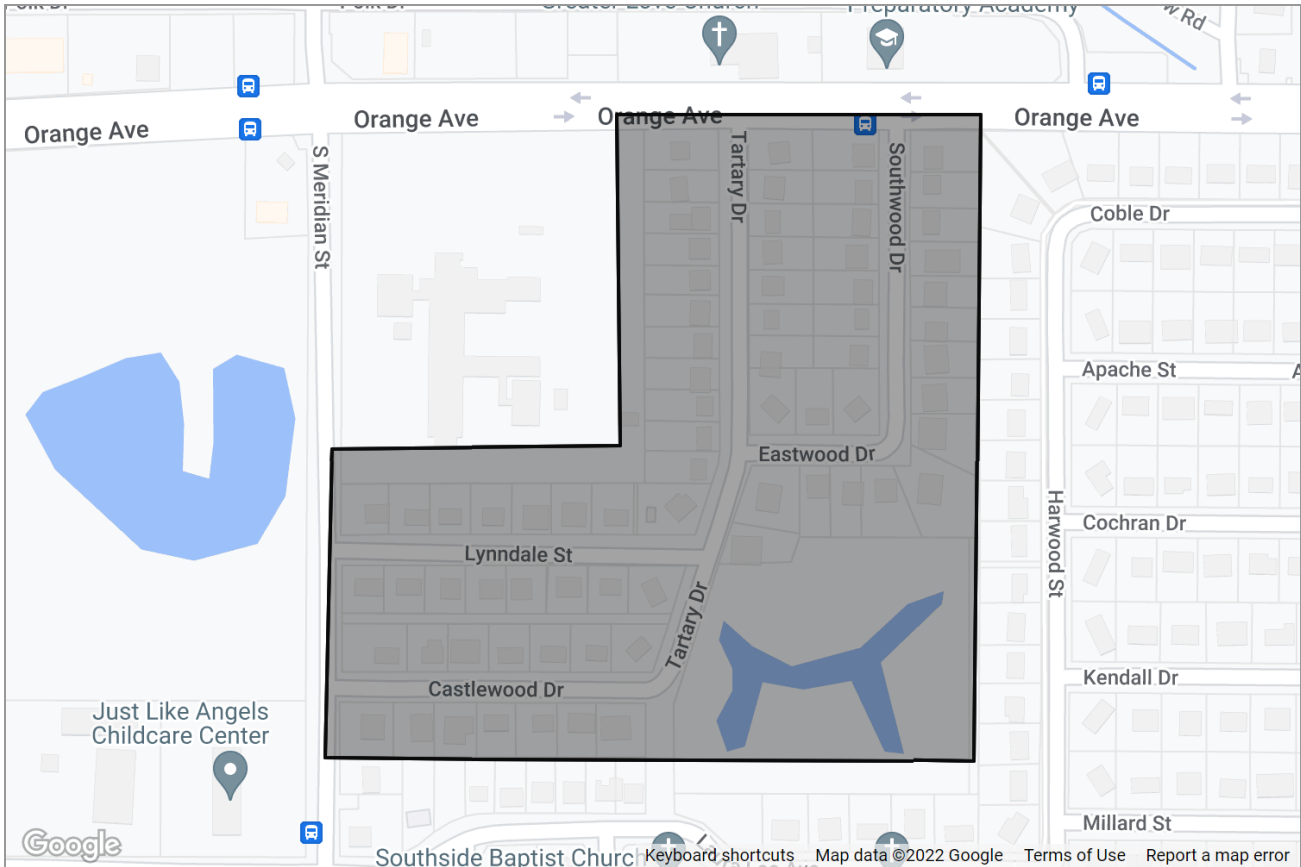




NEIGHBORHOOD REPORT

# Lynndale in Tallahassee, FL



Presented by  
**Abbe Flynn** | Realtor  
Florida Real Estate License: 3273532



Work: (850) 203-0209 | Mobile: (850) 203-0209

Main: [abbe@LivingInTallahassee.com](mailto:abbe@LivingInTallahassee.com)  
Agent: <https://livingintallahassee.com/>

**Ketcham Realty Group**  
1203 Thomasville Road  
Tallahassee, FL 32303



## Neighborhood: Housing Stats and Charts

	Lynndale	Tallahassee	Leon County	Florida	USA
<b>Median Estimated Home Value</b>	\$75.5K	\$283K	\$283K	\$400K	\$344K
<b>Estimated Home Value 12-Month Change</b>	+12.5%	+17.4%	+17.4%	+30.9%	+25.4%
<b>Median List Price</b>	–	\$300K	\$300K	\$471K	–
<b>List Price 1-Month Change</b>	–	+2%	+2%	+3.5%	–
<b>List Price 12-Month Change</b>	–	+9.1%	+9.1%	+30.8%	–
<b>Median Home Age</b>	67	36	36	34	42
<b>Own</b>	38%	40%	53%	65%	64%
<b>Rent</b>	62%	60%	47%	35%	36%
<b>\$ Value of All Buildings for which Permits Were Issued</b>	–	–	\$297M	\$36.9B	\$307B
<b>% Change in Permits for All Buildings</b>	–	–	+15%	+15%	+13%
<b>% Change in \$ Value for All Buildings</b>	–	–	0%	+11%	+10%

## Neighborhood: People Stats and Charts

	Lynndale	Tallahassee	Leon County	Florida	USA
Population	2.72K	191K	290K	20.9M	325M
Population Density per Sq Mi	4.61K	1.9K	435	390	–
Population Change since 2010	-2%	+7.7%	+8%	+15.6%	+8.2%
Median Age	22	27	31	42	38
Male / Female Ratio	37%	47%	47%	49%	49%

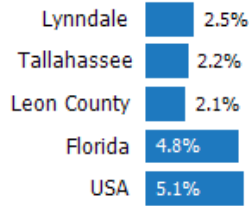
## Education Levels of Population

This chart shows the educational achievement levels of adults in an area, compared with other geographies.

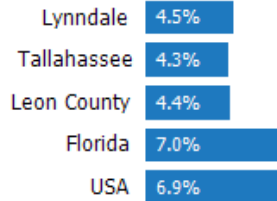
Data Source: U.S. Census American Community Survey via Esri, 2020

Update Frequency: Annually

### Less Than 9th Grade



### 9-12th Grade/No Diploma



### High School Graduate



### Associate Degree



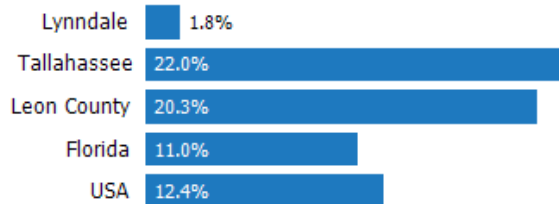
### Bachelor's Degree



### At Least a College Education



### Grad/Professional Degree



## Population of Children by Age Group

This chart shows the distribution of the population of children by age range — from birth to 17 — in the area of your search.

Data Source: U.S. Census

Update Frequency: Annually

■ Lynnndale



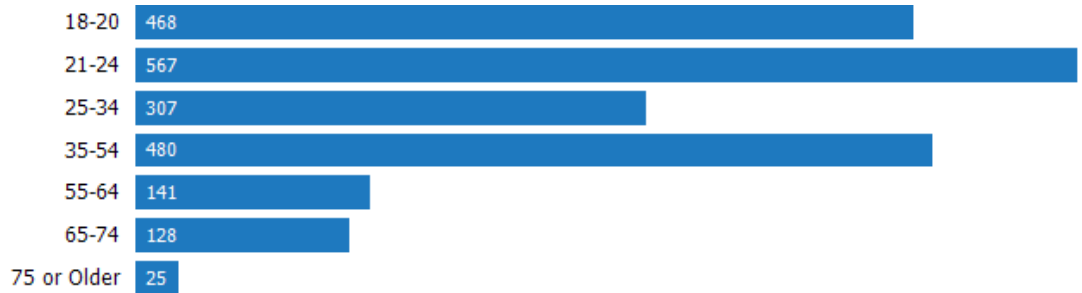
## Population of Adults by Age Group

This chart shows the distribution of the population of adults by age range — from 18 to 75-plus — in the area of your search.

Data Source: U.S. Census

Update Frequency: Annually

■ Lynnndale



## Households With Children

This chart shows the distribution of households with children, categorized by marital status, in the area of your search.

Data Source: U.S. Census

Update Frequency: Annually

■ Lynnndale



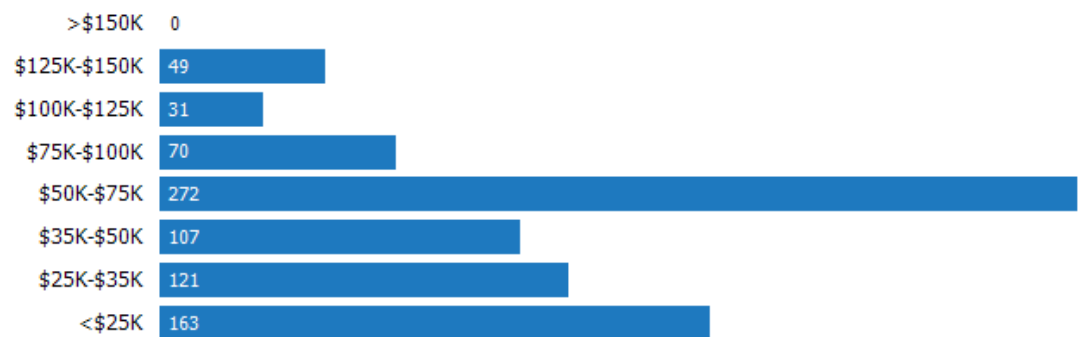
## Household Income Brackets

This chart shows annual household income levels within an area.

Data Source: U.S. Census

Update Frequency: Annually

■ Lynnndale



## Presidential Voting Pattern

This chart shows how residents of a county voted in the 2020 presidential election.

Data Source: USElectionAtlas.org

Update Frequency: Quadrennially



## Neighborhood: Economic Stats and Charts

	Lynndale	Tallahassee	Leon County	Florida	USA
<b>Income Per Capita</b>	\$17,019	\$27,677	\$30,586	\$31,619	\$34,103
<b>Median Household Income</b>	\$50,473	\$45,734	\$53,106	\$55,660	\$62,843
<b>Unemployment Rate</b>	–	3.8%	3.4%	3.1%	3.8%
<b>Unemployment Number</b>	–	3.9K	5.39K	322K	–
<b>Employment Number</b>	–	–	–	10.2M	–
<b>Labor Force Number</b>	–	–	–	10.5M	–

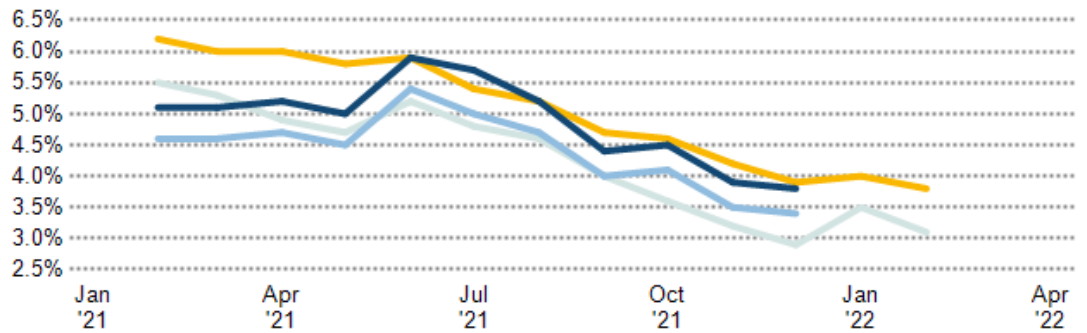
### Unemployment Rate

This chart shows the unemployment trend in the area of your search. The unemployment rate is an important driver behind the housing market.

Data Source: Bureau of Labor Statistics

Update Frequency: Monthly

- Tallahassee
- Leon County
- Florida
- USA



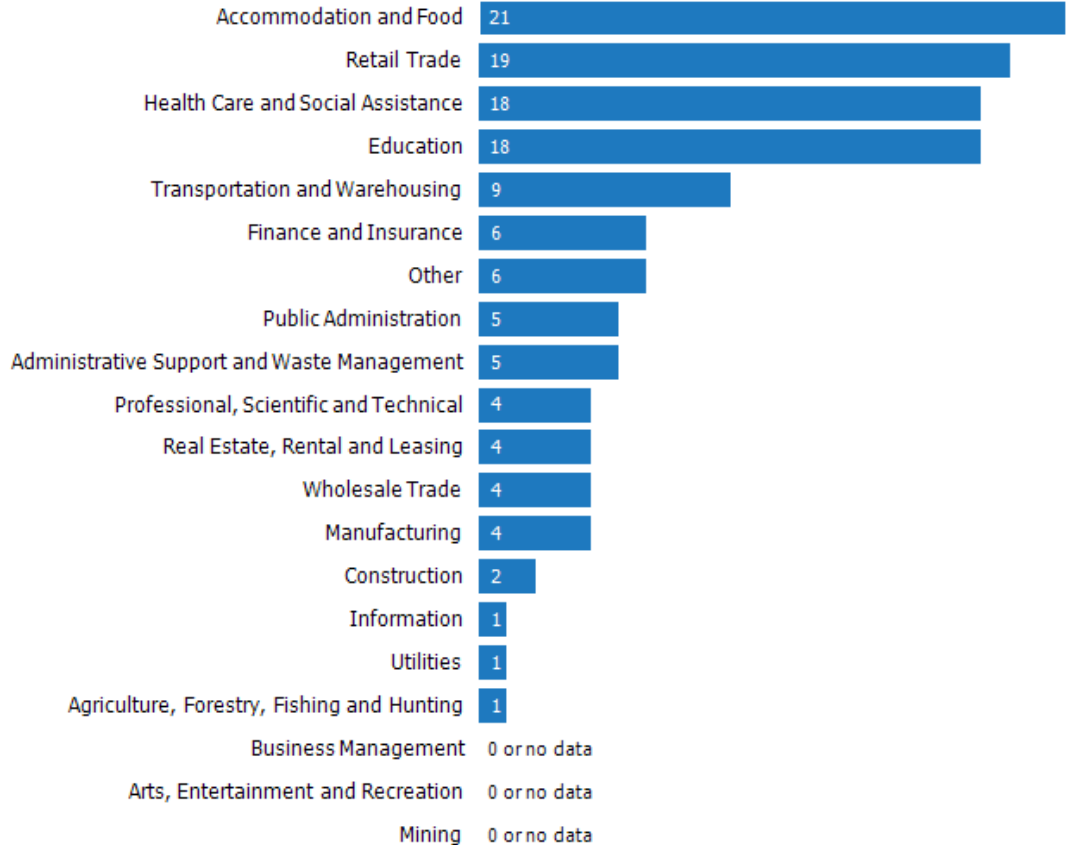
### Occupational Categories

This chart shows categories of employment within an area.

Data Source: U.S. Census

Update Frequency: Annually

- Lynndale



## Neighborhood: Quality of Life Stats and Charts

Quality of Life in –

	Lynndale	Tallahassee	Leon County	Florida	USA
Elevation (in feet)	104	–	99	–	–
Annual Rainfall (in inches)	60	60	60	56.39	–
Annual Snowfall (in inches)	0	0	0.03	0.06	–
Days of Full Sun (per year)	98	98	98	98	–
Travel Time to Work (in minutes)	–	19	21	28	27
Water Quality - Health Violations	–	–	–	–	–
Water Quality - Monitoring and Report Violations	–	–	–	–	–
Superfund Sites	0	0	0	91	2,417
Brownfield Sites	No	Yes	Yes	Yes	Yes

### Average Commute Time

This chart shows average commute times to work, in minutes, by percentage of an area's population.

Data Source: U.S. Census

Update Frequency: Annually



Lynndale

### How People Get to Work

This chart shows the types of transportation that residents of the area you searched use for their commute.

Data Source: U.S. Census

Update Frequency: Annually

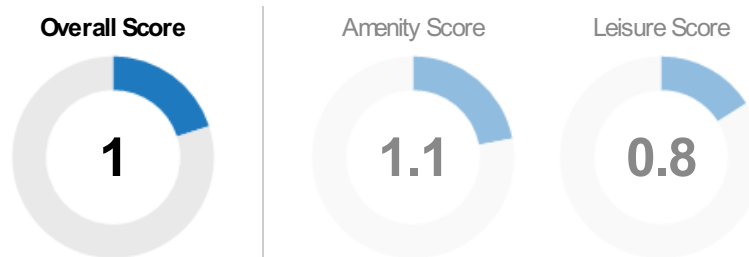


### Walkability Scores (out of 5)

This neighborhood or ZIP code is rated for walking access to general points of interest, reflected in the overall score, plus amenities (such as retail stores) and leisure (such as restaurants and parks). Other factors considered in the scores are street types, weather, public transportation and population density.

Data Source: Maponics

Update Frequency: Quarterly

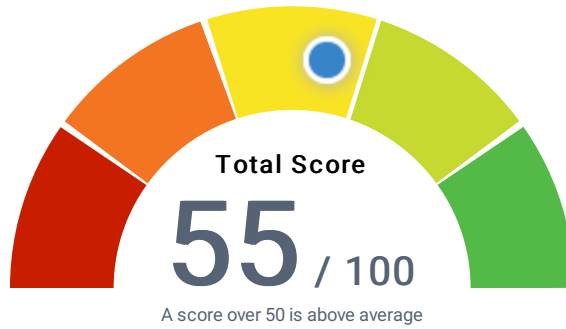


## AARP Livability™ Index for 32301

This chart rates the overall livability of a selected ZIP code on a scale from 0 to 100. AARP Livability™ is a trademark of AARP Inc.

Data Source: [AARP](#)

Update Frequency: Annual



<b>Housing</b>	<b>61</b>
Affordability & Access	
<b>Neighborhood</b>	<b>52</b>
Access to Life, Work & Play	
<b>Transportation</b>	<b>63</b>
Safe & Convenient Options	
<b>Environment</b>	<b>63</b>
Clean Air & Water	
<b>Health</b>	<b>39</b>
Prevention, Access & Quality	
<b>Engagement</b>	<b>58</b>
Civic & Social Involvement	
<b>Opportunity</b>	<b>46</b>
Inclusion & Possibilities	



## About RPR (Realtors Property Resource)

- Realtors Property Resource® is a wholly owned subsidiary of the National Association REALTORS®.
- RPR offers comprehensive data – including a nationwide database of 164 million properties – as well as powerful analytics and dynamic reports exclusively for members of the NAR.
- RPR's focus is giving residential and commercial real estate practitioners, brokers, and MLS and Association staff the tools they need to serve their clients.
- This report has been provided to you by a member of the NAR.



## About RPR's Data

RPR generates and compiles real estate and other data from a vast array of sources. The data contained in your report includes some or all of the following:

- **Listing data** from our partner MLSs and CIEs, and related calculations, like estimated value for a property or median sales price for a local market.
- **Public records data** including tax, assessment, and deed information. Foreclosure and distressed data from public records.
- **Market conditions and forecasts** based on listing and public records data.
- **Census and employment data** from the U.S. Census and the U.S. Bureau of Labor Statistics.
- **Demographics and trends data** from Esri. The data in commercial and economic reports includes Tapestry Segmentation, which classifies U.S. residential neighborhoods into unique market segments based on socioeconomic and demographic characteristics.
- **Business data** including consumer expenditures, commercial market potential, retail marketplace, SIC and NAICS business information, and banking potential data from Esri.
- **School data and reviews** from Niche.
- **Specialty data sets** such as walkability scores, traffic counts and flood zones.



## Update Frequency

- Listings and public records data are updated on a continuous basis.
- Charts and statistics calculated from listing and public records data are refreshed monthly.
- Other data sets range from daily to annual updates.

## Learn more

For more information about RPR, please visit RPR's public website: <https://blog.narrpr.com>

