

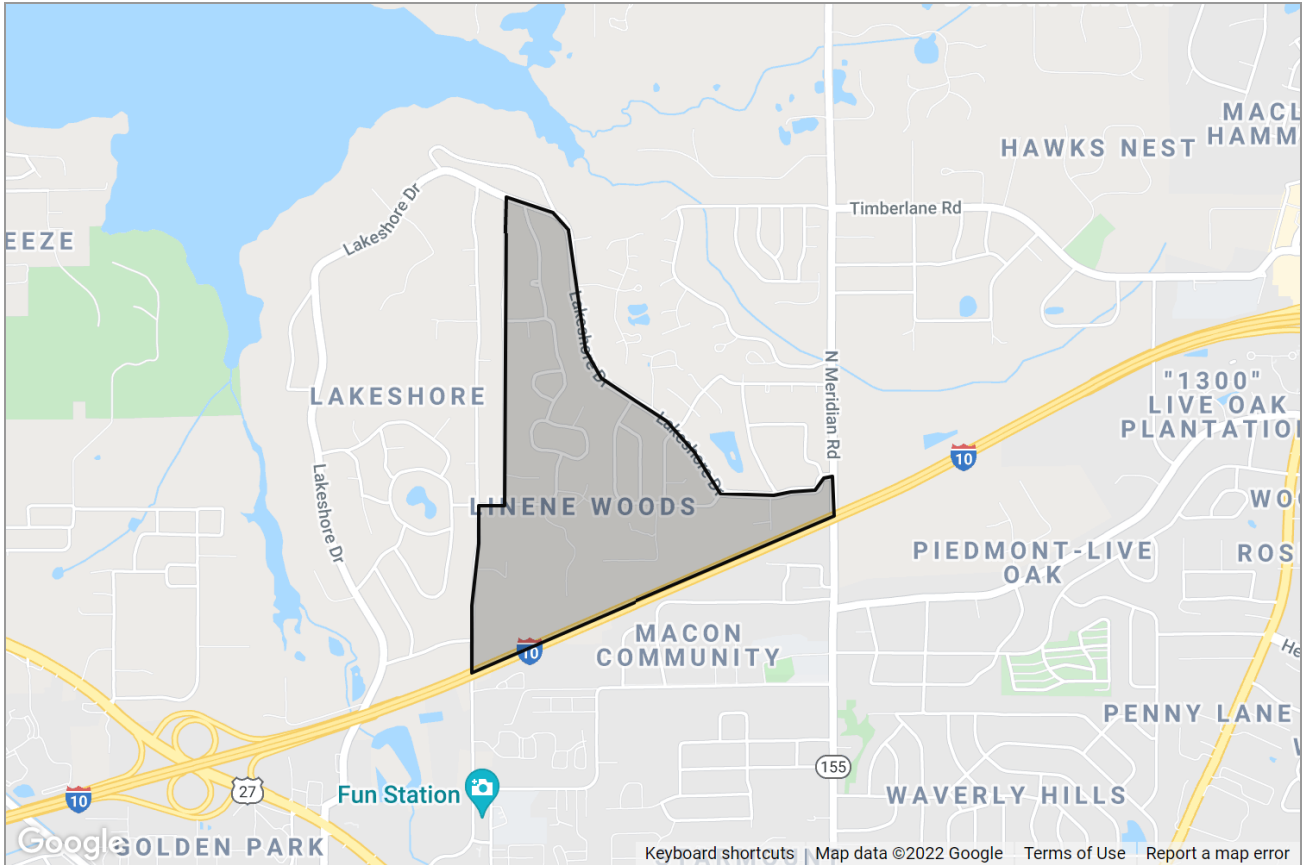


CATRS CAPITAL AREA TECHNOLOGY & REALTOR® SERVICES

A Subsidiary of **Tallahassee** BOARD OF REALTORS®

COMMERCIAL TRADE AREA REPORT

Linene Woods in Leon County, FL



Presented by
Abbe Flynn | Realtor
Florida Real Estate License: 3273532



Work: (850) 203-0209 | Mobile: (850) 203-0209

Main: abbe@LivingInTallahassee.com
Agent: <https://livingintallahassee.com/>

Ketcham Realty Group
1203 Thomasville Road
Tallahassee, FL 32303



Criteria Used for Analysis

Income:
Median Household Income
\$86,184

Age:
Median Age
50.9

Population Stats:
Total Population
787

Segmentation:
1st Dominant Segment
Exurbanites

Consumer Segmentation

<p>Life Mode</p> <p>What are the people like that live in this area?</p>	<p>Affluent Estates Established wealth—educated, well-travelled married couples</p>	<p>Urbanization</p> <p>Where do people like this usually live?</p>	<p>Suburban Periphery Affluence in the suburbs, married couple-families, longer commutes</p>
---	--	---	---

Top Tapestry Segments

	Exurbanites
% of Households	331 (100.0%)
Lifestyle Group	Affluent Estates
Urbanization Group	Suburban Periphery
Residence Type	Single Family
Household Type	Married Couples
Average Household Size	2.48
Median Age	49.6
Diversity Index	32.6
Median Household Income	\$98,000
Median Net Worth	\$451,000
Median Home Value	\$346,000
Homeownership	85.4 %
Employment	Professional or Management
Education	College Degree
Preferred Activities	Contract for home care services. Prefer natural, organic products.
Financial	Invest actively; use financial planners
Media	Support public TV/radio
Vehicle	Choose late-model luxury cars, SUVs

About this segment

Exurbanites

This is the
#1
dominant segment
for this area

In this area
100.0%
of households fall
into this segment

In the United States
1.9%
of households fall
into this segment

An overview of who makes up this segment across the United States

Who We Are

Exurbanites residents are approaching retirement but showing few signs of slowing down. They are active in their communities, generous in their donations, and seasoned travelers. They take advantage of their proximity to large metropolitan centers to support the arts, but prefer a more expansive home style in less crowded neighborhoods. They have cultivated a lifestyle that is both affluent and urbane.

Our Neighborhood

- Established neighborhoods (most built between 1970 and 1990) found in the suburban periphery of large metropolitan markets.
- A larger market of empty nesters, married couples with no children; average household size is 2.48.
- Primarily single-family homes with a high median value of \$346,000, most still carrying mortgages.
- Higher vacancy rate at 9%.

Socioeconomic Traits

- Residents are college educated; more than half have a bachelor's degree or higher, almost 80% have some college education.
- This labor force is beginning to retire. One in three households currently receive Social Security or retirement income. Labor force participation has declined to less than 60%.
- Unemployment remains low at 5.5%; more of the residents prefer self-employment or working from home.
- Consumers are more interested in quality than cost. They take pride in their homes and foster a sense of personal style.
- Exurbanites residents are well connected, using the Internet for everything from shopping to managing their finances.
- Sociable and hardworking, they still find time to stay physically fit.

Market Profile

- Exurbanites residents' preferred vehicles are late-model luxury cars or SUVs
- They are active supporters of the arts and public television/radio.
- Attentive to ingredients, they prefer natural or organic products.
- Gardening and home improvement are priorities, but they also use a number of services, from home care and maintenance to personal care.
- Financially active with wide-ranging investments, these investors rely on financial planners, extensive reading and the Internet to handle their money.

The demographic segmentation shown here can help you understand the lifestyles and life stages of consumers in a market. Data provider Esri classifies U.S. residential neighborhoods into 67 unique market segments based on socioeconomic and demographic characteristics. Data Source: Esri 2020. Update Frequency: Annually.

Linene Woods in Leon County, FL: Population Comparison

Total Population

This chart shows the total population in an area, compared with other geographies.

Data Source: U.S. Census American Community Survey via Esri, 2020

Update Frequency: Annually

■ 2020
■ 2025 (Projected)



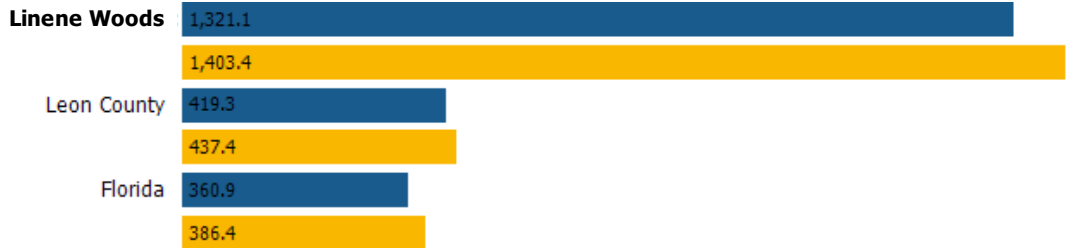
Population Density

This chart shows the number of people per square mile in an area, compared with other geographies.

Data Source: U.S. Census American Community Survey via Esri, 2020

Update Frequency: Annually

■ 2020
■ 2025 (Projected)



Population Change Since 2010

This chart shows the percentage change in area's population from 2010 to 2020, compared with other geographies.

Data Source: U.S. Census American Community Survey via Esri, 2020

Update Frequency: Annually

■ 2020
■ 2025 (Projected)



Total Daytime Population

This chart shows the number of people who are present in an area during normal business hours, including workers, and compares that population to other geographies. Daytime population is in contrast to the "resident" population present during evening and nighttime hours.

Data Source: U.S. Census American Community Survey via Esri, 2020

Update Frequency: Annually

■ Linene Woods



Daytime Population Density

This chart shows the number people who are present in an area during normal business hours, including workers, per square mile in an area, compared with other geographies. Daytime population is in contrast to the "resident" population present during evening and nighttime hours.

Data Source: U.S. Census American Community Survey via Esri, 2020

Update Frequency: Annually



■ Linene Woods

Average Household Size

This chart shows the average household size in an area, compared with other geographies.

Data Source: U.S. Census American Community Survey via Esri, 2020

Update Frequency: Annually



■ 2020
■ 2025 (Projected)

Population Living in Family Households

This chart shows the percentage of an area's population that lives in a household with one or more individuals related by birth, marriage or adoption, compared with other geographies.

Data Source: U.S. Census American Community Survey via Esri, 2020

Update Frequency: Annually



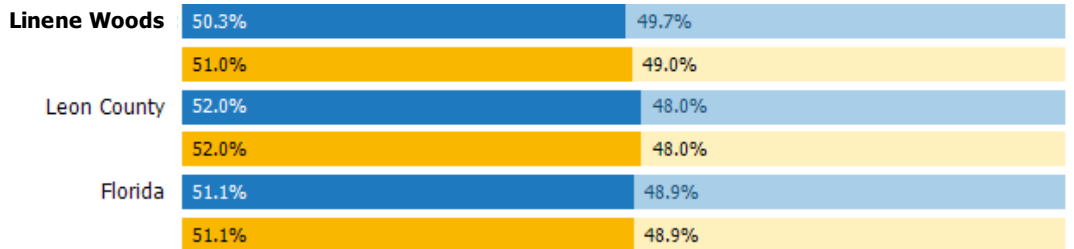
■ 2020
■ 2025 (Projected)

Female / Male Ratio

This chart shows the ratio of females to males in an area, compared with other geographies.

Data Source: U.S. Census American Community Survey via Esri, 2020

Update Frequency: Annually



■ Women 2020
■ Men 2020
■ Women 2025 (Projected)
■ Men 2025 (Projected)

Linene Woods in Leon County, FL: Age Comparison

Median Age

This chart shows the median age in an area, compared with other geographies.

Data Source: U.S. Census American Community Survey via Esri, 2020

Update Frequency: Annually

■ 2020
 ■ 2025 (Projected)



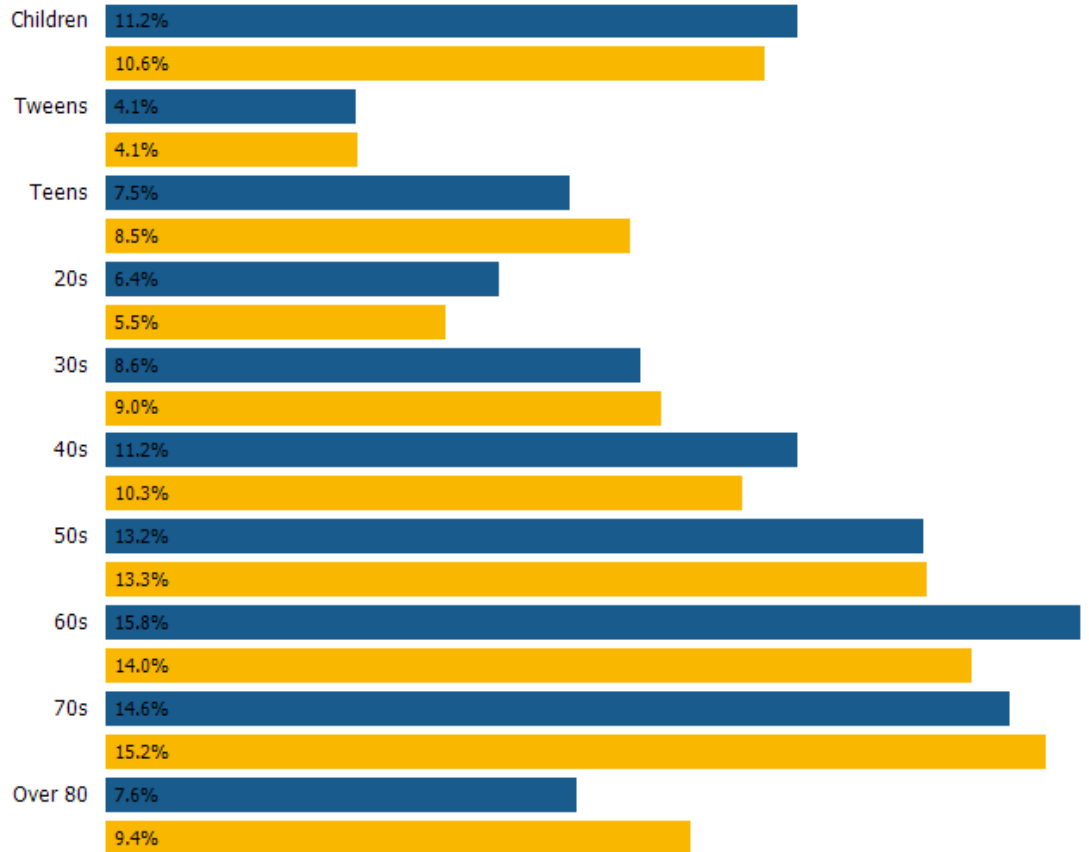
Population by Age

This chart breaks down the population of an area by age group.

Data Source: U.S. Census American Community Survey via Esri, 2020

Update Frequency: Annually

■ 2020
 ■ 2025 (Projected)



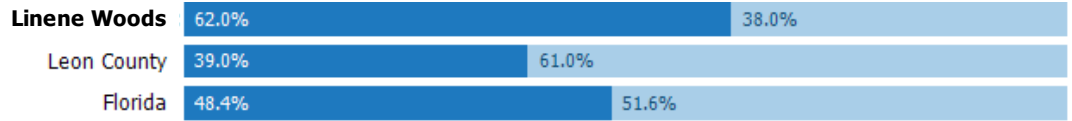
Linene Woods in Leon County, FL: Marital Status Comparison

Married / Unmarried Adults Ratio

This chart shows the ratio of married to unmarried adults in an area, compared with other geographies.

Data Source: U.S. Census American Community Survey via Esri, 2020

Update Frequency: Annually



Married

This chart shows the number of people in an area who are married, compared with other geographies.

Data Source: U.S. Census American Community Survey via Esri, 2020

Update Frequency: Annually



Never Married

This chart shows the number of people in an area who have never been married, compared with other geographies.

Data Source: U.S. Census American Community Survey via Esri, 2020

Update Frequency: Annually



Widowed

This chart shows the number of people in an area who are widowed, compared with other geographies.

Data Source: U.S. Census American Community Survey via Esri, 2020

Update Frequency: Annually



Divorced

This chart shows the number of people in an area who are divorced, compared with other geographies.

Data Source: U.S. Census American Community Survey via Esri, 2020

Update Frequency: Annually



Linene Woods in Leon County, FL: Economic Comparison

Average Household Income

This chart shows the average household income in an area, compared with other geographies.

Data Source: U.S. Census American Community Survey via Esri, 2020

Update Frequency: Annually

■ 2020
■ 2025 (Projected)



Median Household Income

This chart shows the median household income in an area, compared with other geographies.

Data Source: U.S. Census American Community Survey via Esri, 2020

Update Frequency: Annually

■ 2020
■ 2025 (Projected)



Per Capita Income

This chart shows per capita income in an area, compared with other geographies.

Data Source: U.S. Census American Community Survey via Esri, 2020

Update Frequency: Annually

■ 2020
■ 2025 (Projected)



Average Disposable Income

This chart shows the average disposable income in an area, compared with other geographies.

Data Source: U.S. Census American Community Survey via Esri, 2020

Update Frequency: Annually



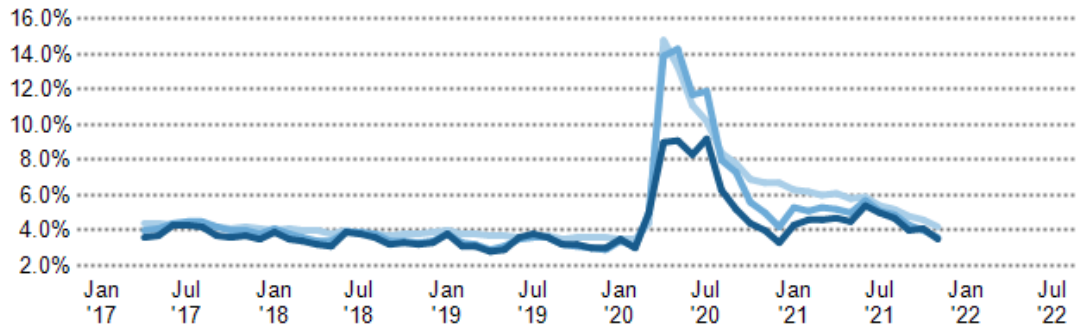
Unemployment Rate

This chart shows the unemployment trend in an area, compared with other geographies

Data Source: Bureau of Labor Statistics via 3DL

Update Frequency: Monthly

- Leon County
- Florida
- USA

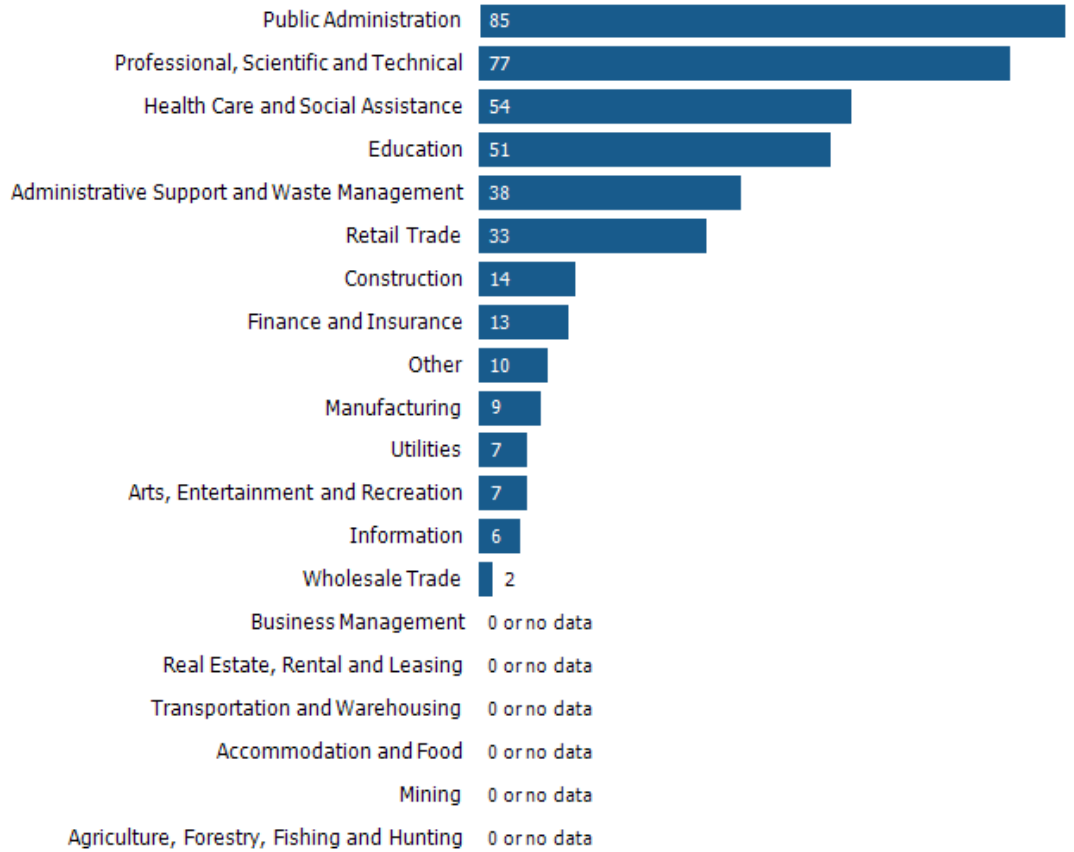


Employment Count by Industry

This chart shows industries in an area and the number of people employed in each category.

Data Source: Bureau of Labor Statistics via Esri, 2020

Update Frequency: Annually



Linene Woods in Leon County, FL: Education Comparison

Less than 9th Grade

This chart shows the percentage of people in an area who have less than a ninth grade education, compared with other geographies.

Data Source: U.S. Census American Community Survey via Esri, 2020

Update Frequency: Annually



Some High School

This chart shows the percentage of people in an area whose highest educational achievement is some high school, without graduating or passing a high school GED test, compared with other geographies.

Data Source: U.S. Census American Community Survey via Esri, 2020

Update Frequency: Annually



High School GED

This chart shows the percentage of people in an area whose highest educational achievement is passing a high school GED test, compared with other geographies.

Data Source: U.S. Census American Community Survey via Esri, 2020

Update Frequency: Annually



High School Graduate

This chart shows the percentage of people in an area whose highest educational achievement is high school, compared with other geographies.

Data Source: U.S. Census American Community Survey via Esri, 2020

Update Frequency: Annually



Some College

This chart shows the percentage of people in an area whose highest educational achievement is some college, without receiving a degree, compared with other geographies.

Data Source: U.S. Census American Community Survey via Esri, 2020

Update Frequency: Annually



Associate Degree

This chart shows the percentage of people in an area whose highest educational achievement is an associate degree, compared with other geographies.

Data Source: U.S. Census American Community Survey via Esri, 2020

Update Frequency: Annually



Bachelor's Degree

This chart shows the percentage of people in an area whose highest educational achievement is a bachelor's degree, compared with other geographies.

Data Source: U.S. Census American Community Survey via Esri, 2020

Update Frequency: Annually



Grad/Professional Degree

This chart shows the percentage of people in an area whose highest educational achievement is a graduate or professional degree, compared with other geographies.

Data Source: U.S. Census American Community Survey via Esri, 2020

Update Frequency: Annually



Linene Woods in Leon County, FL: Commute Comparison

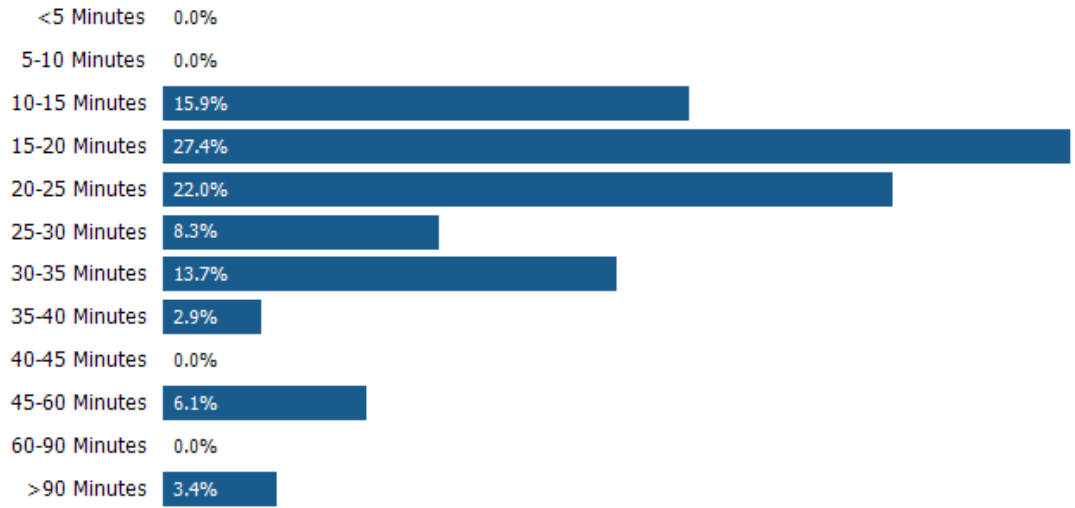
Average Commute Time

This chart shows average commute times to work, in minutes, by percentage of an area's population.

Data Source: U.S. Census American Community Survey via Esri, 2020

Update Frequency: Annually

 Linene Woods



How People Get to Work

This chart shows the types of transportation that residents of the area you searched use for their commute, by percentage of an area's population.

Data Source: U.S. Census American Community Survey via Esri, 2020

Update Frequency: Annually

 Linene Woods



Linene Woods in Leon County, FL: Home Value Comparison

Median Estimated Home Value

This chart displays property estimates for an area and a subject property, where one has been selected. Estimated home values are generated by a valuation model and are not formal appraisals.

Data Source: Valuation calculations based on public records and MLS sources where licensed

Update Frequency: Monthly



12 mo. Change in Median Estimated Home Value

This chart shows the 12-month change in the estimated value of all homes in this area, the county and the state. Estimated home values are generated by a valuation model and are not formal appraisals.

Data Source: Valuation calculations based on public records and MLS sources where licensed

Update Frequency: Monthly



Median Listing Price

This chart displays the median listing price for homes in this area, the county and the state.

Data Source: On- and off-market listings sources

Update Frequency: Monthly

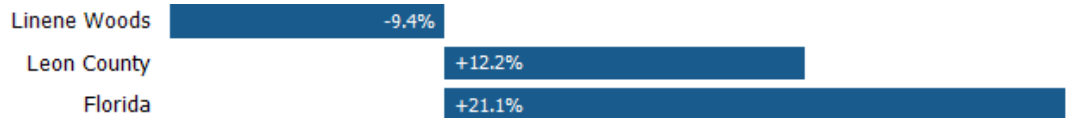


12 mo. Change in Median Listing Price

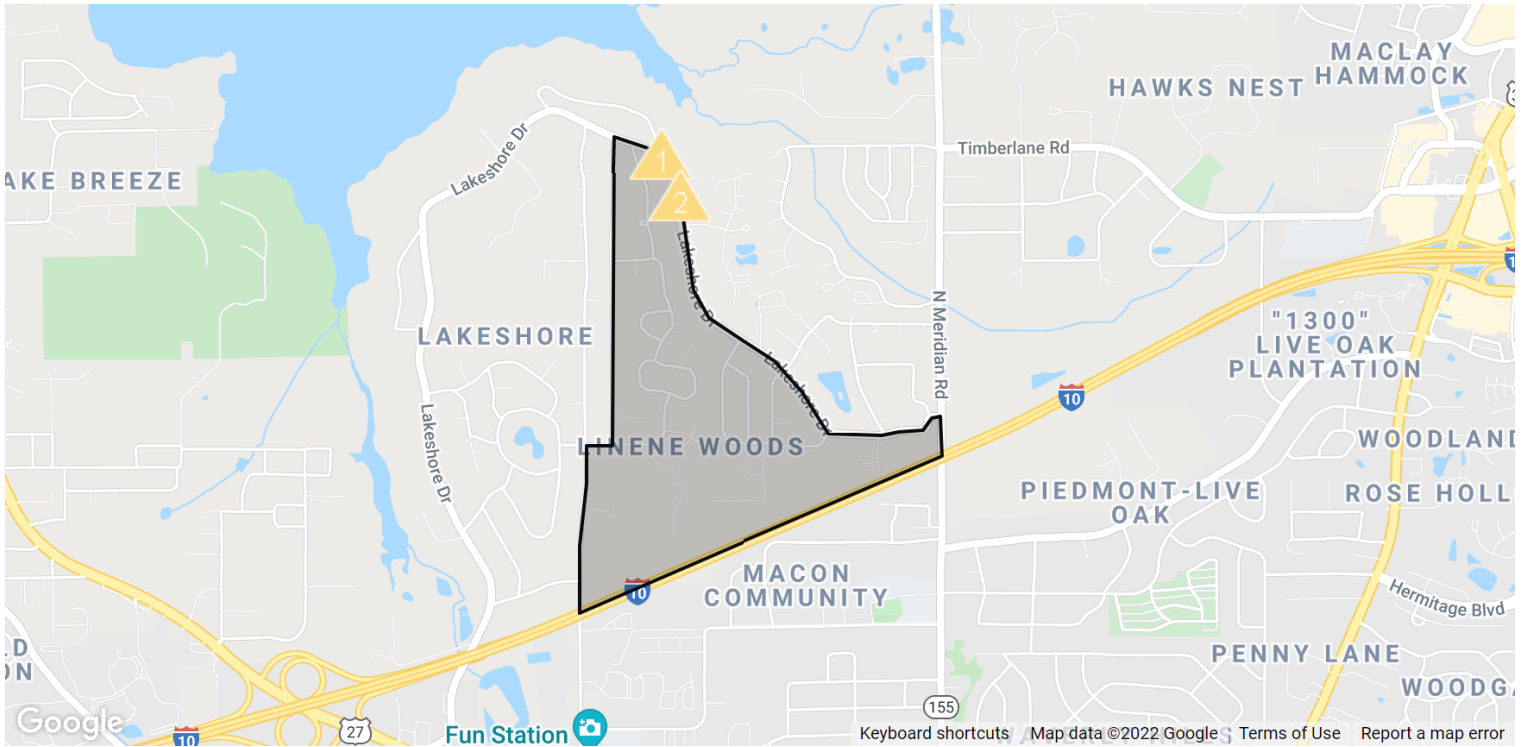
This chart displays the 12-month change in the median listing price of homes in this area, and compares it to the county and state.

Data Source: On- and off-market listings sources

Update Frequency: Monthly



Traffic Counts



Daily Traffic Counts: ▲ Up 6,000 / day ▲ 6,001 – 15,000 ▲ 15,001 – 30,000 ▲ 30,001 – 50,000 ▲ 50,001 – 100,000 ▲ Over 100,000 / day

1

3,172

2021 Est. daily traffic counts

Street: **Lakeshore Drive North**
 Cross: **Duparc Cir**
 Cross Dir: **SE**
 Dist: **0.01 miles**

2

2,754

2021 Est. daily traffic counts

Street: **E Lakeshore Dr**
 Cross: **Hunters Xing**
 Cross Dir: **N**
 Dist: **0.07 miles**

Historical counts

Year	Count	Type
2019	▲ 3,200	AA DT
2018	▲ 3,100	AA DT

Historical counts

Year	Count	Type
2011	▲ 2,700	AA DT

NOTE: Daily Traffic Counts are a mixture of actual and Estimates (*)

About RPR (Realtors Property Resource)

- Realtors Property Resource® is a wholly owned subsidiary of the National Association REALTORS®.
- RPR offers comprehensive data – including a nationwide database of 164 million properties – as well as powerful analytics and dynamic reports exclusively for members of the NAR.
- RPR's focus is giving residential and commercial real estate practitioners, brokers, and MLS and Association staff the tools they need to serve their clients.
- This report has been provided to you by a member of the NAR.



About RPR's Data

RPR generates and compiles real estate and other data from a vast array of sources. The data contained in your report includes some or all of the following:

- **Listing data** from our partner MLSs and CIEs, and related calculations, like estimated value for a property or median sales price for a local market.
- **Public records data** including tax, assessment, and deed information. Foreclosure and distressed data from public records.
- **Market conditions and forecasts** based on listing and public records data.
- **Census and employment data** from the U.S. Census and the U.S. Bureau of Labor Statistics.
- **Demographics and trends data** from Esri. The data in commercial and economic reports includes Tapestry Segmentation, which classifies U.S. residential neighborhoods into unique market segments based on socioeconomic and demographic characteristics.
- **Business data** including consumer expenditures, commercial market potential, retail marketplace, SIC and NAICS business information, and banking potential data from Esri.
- **School data and reviews** from Niche.
- **Specialty data sets** such as walkability scores, traffic counts and flood zones.



Update Frequency

- Listings and public records data are updated on a continuous basis.
- Charts and statistics calculated from listing and public records data are refreshed monthly.
- Other data sets range from daily to annual updates.

Learn more

For more information about RPR, please visit RPR's public website: <https://blog.narrpr.com>

